

Welcome to the written test in aural training and music theory!

1. Auditive test

Name: _____

Principal study: _____

1. Auditive test

Question 1a

You'll now hear extracts from 4 pieces of music. Please identify the musical style and period of each example and write an approximate year of composition in the boxes below.

Each piece of music will be played through once. The first example has already been filled in.

	Example 1	Example 2	Example 3	Example 4
Renaissance				
Baroque				
Classical	X			
Romantic				
20 th century				
Approximate year of composition:	1780			

Question 1b

You'll now hear the same 4 pieces of music. Please identify the ensemble of each composition. The first example has already been filled in.

	Example 1	Example 2	Example 3	Example 4
Opera/oratorio				
Vocal music				
Orchestral music				
Chamber music	X			
Solo concerto				
Solo instrument				

Question 2

Here you'll hear extracts from 3 pieces of music where you have to identify the type of tonality of the music. Each piece will be played through once. The first example has already been filled in.

	Example 1	Example 2	Example 3
Major/minor			
Modal/Church modes	X		
Other			

Question 3

You'll now hear extracts from 3 new pieces of music where you have to identify the time (or metre) of the music. Each piece will be played through once. The first example has already been filled in.

	Example 1	Example 2	Example 3
Duple or quadruple time			
Triple time	X		
Other			

Question 4

You'll now hear extracts from 4 pieces of music. In the boxes below please mark which kind of musical texture you hear. Each piece will be played through once. The first example has already been filled in.

	Ex. 1	Ex. 2	Ex. 3	Ex. 4
Homophonic texture (including chordal style)				
Melody-plus-accompaniment				
Polyphonic texture (including imitation)	X			

Question 5

You'll now hear 3 short pieces of music. Please mark in the boxes below the musical form of each piece. The first example will be played through once while the rest will be played twice. The first example has already been filled in.

	Example 1	Example 2	Example 3
A - B			
A - B - A	X		
A - B - B			
A - A - B - A ¹			

Question 6

You'll now hear extracts from 4 pieces of music. Mark in the boxes below which instruments are playing. The first example has already been filled in.

	Example 1 (2 instruments)	Example 2 (2 instruments)	Example 3 (3 instruments)	Example 4 (4 instruments)
Flute				
Oboe	X			
Clarinet				
Bassoon				
Horn				
Trumpet				
Trombone				
Harp				
Piano				
Guitar	X			
Organ				
Violin				
Viola				
Cello				
Doublebass				

Question 7a

Here you have to identify a number of chords played on the piano. Each example will be played twice. The first example has already been filled in.

	Ex. 1	Ex. 2	Ex. 3	Ex. 4	Ex. 5	Ex. 6
Major triad						
Minor triad	X					
Diminished triad						
Augmented triad						
Seventh chord						

Question 7b

Next you'll hear a number of different chords which you are to identify as well. Each example will be played only once. The first example has already been filled in.

	Ex. 1	Ex. 2	Ex. 3	Ex. 4	Ex. 5	Ex. 6
Major triad	X					
Minor triad						
Diminished triad						
Augmented triad						
Chords of 4ths or 5ths						
Note-cluster/cluster chord						
Seventh chord						

Question 8

In the following extracts from 4 pieces of music you have to identify which type of chord has been left out in the example below.

Each example will be played twice. The answer to the first example has already been given.

Example 1 (wind quintet):



- Major triad
- Minor triad
- Diminished triad
- Augmented triad
- Seventh chord
- Other

Question 8 (continued)

Example 2 (piano):

- Major triad
- Minor triad
- Diminished triad
- Augmented triad
- Seventh chord
- Other

Example 3 (chorus):

- Major triad
- Minor triad
- Diminished triad
- Augmented triad
- Seventh chord
- Other

Example 4 (piano):

- Major triad
- Minor triad
- Diminished triad
- Augmented triad
- Seventh chord
- Other

Question 9a

Now you have to identify a number of intervals. Each example will be played twice. The first example has already been filled in.

Example 1:

- Major 2nd
 Diminished 5th
 Minor 7th
 Major 9th

Example 2:

- Perfect 5th
 Major 6th
 Major 7th
 Octave

Example 3:

- Major 3rd
 Perfect 4th
 Augmented 4th
 Perfect 5th

Example 4:

- Minor 3rd
 Perfect 5th
 Octave
 Minor 10th

Example 5:

- Minor 3rd
 Minor 6th
 Major 6th
 Major 10th

Example 6:

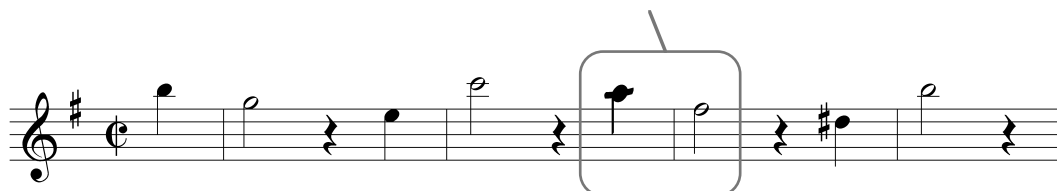
- Minor 2nd
 Diminished 5th
 Major 7th
 Minor 9th

Question 9b

Now follow 4 short melodies. They will each be played through twice. Please write the missing notes and mark in the boxes the interval between the 2 notes. The first example has already been filled in. Please note that you have to find two intervals in both examples 2, 3, and 4.

Example 1 (violin):

- Minor 3rd
 Major 3rd
 Perfect 4th
 Diminished 5th



Question 9b (continued)

Example 2 (cello):

<p>Major 3rd <input type="checkbox"/></p> <p>Minor 3rd <input type="checkbox"/></p> <p>Major 2nd <input type="checkbox"/></p> <p>Perfect 4th <input type="checkbox"/></p>	<p>Minor 6th <input type="checkbox"/></p> <p>Minor 7th <input type="checkbox"/></p> <p>Augmented 4th <input type="checkbox"/></p> <p>Major 7th <input type="checkbox"/></p>
---	---

Example 3 (horn):

<p>Minor 7th <input type="checkbox"/></p> <p>Octave <input type="checkbox"/></p> <p>Perfect 5th <input type="checkbox"/></p> <p>Minor 6th <input type="checkbox"/></p>	<p>Major 3rd <input type="checkbox"/></p> <p>Major 2nd <input type="checkbox"/></p> <p>Minor 2nd <input type="checkbox"/></p> <p>Perfect 4th <input type="checkbox"/></p>
--	---

Example 4 (clarinet):

<p>Perfect 4th <input type="checkbox"/></p> <p>Minor 7th <input type="checkbox"/></p> <p>Minor 6th <input type="checkbox"/></p> <p>Perfect 5th <input type="checkbox"/></p>	<p>Perfect 5th <input type="checkbox"/></p> <p>Minor 6th <input type="checkbox"/></p> <p>Minor 7th <input type="checkbox"/></p> <p>Perfect 4th <input type="checkbox"/></p>
---	---

Question 10

You'll now be given a note which is the first note in a piece of music. From this note you must now identify the key of the piece.

Each example will be played through twice. The first example has already been filled in.

Example 1: First note:  Key:

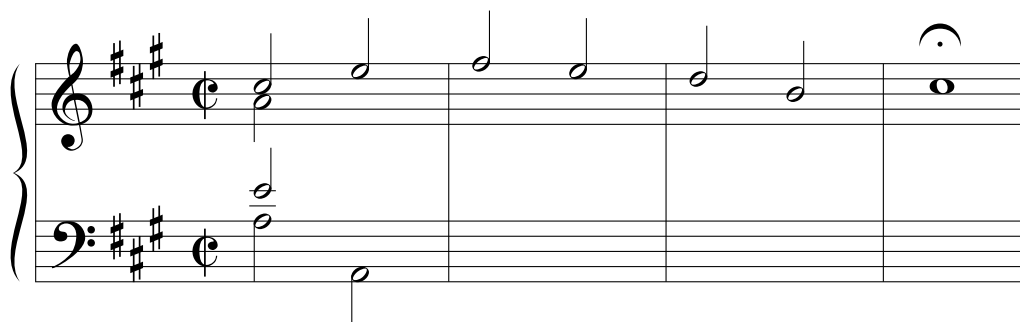
Example 2: First note:  Key:

Example 3: First note:  Key:

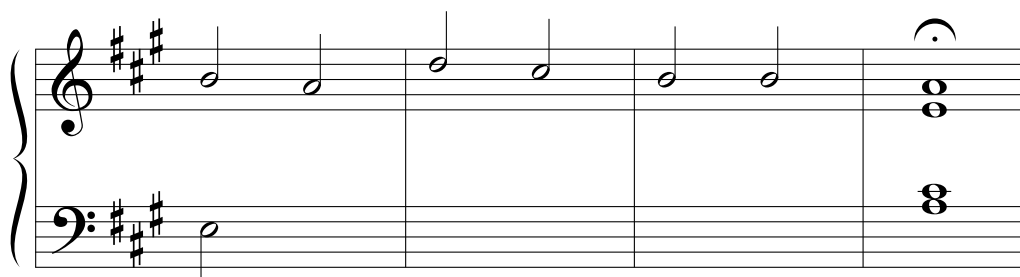
Question 11

The four-part chorale you see below will be played by a string quartet. In the first and last chords of the chorale all four parts have been notated. Your task is to fill in the cello part, eg the bass part, and also write chord symbols. Use either tonic sol-fa analysis (T, D, S etc.) or degree analysis (I, V, IV etc.).

You'll hear the entire chorale through once, then each phrase twice, and finally the whole chorale once more.



A:



There will now be a short break