

Navn: \_\_\_\_\_

Notér becifring på flg. akkorder (alle med grundtonen i bassen)

5

Notér flg. akkorder

9

Cm<sup>7</sup>                      B<sup>b</sup>add<sup>9</sup>                      Gmaj<sup>7</sup>                      A<sup>b</sup>/B<sup>b</sup>

13

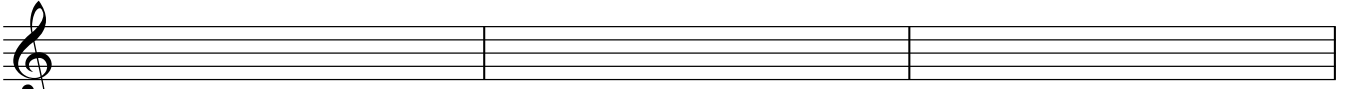
F<sup>#</sup>6                      Em<sup>7b5</sup>                      C<sup>#</sup>dim                      A<sup>7</sup>sus<sup>4</sup>

2

Navn: \_\_\_\_\_

Notér flg. skalaer

17

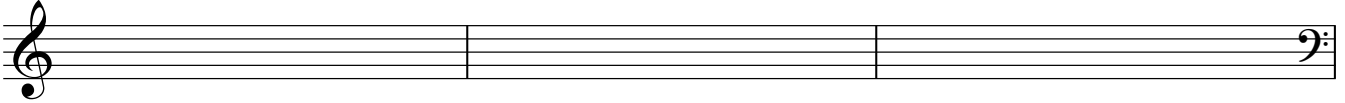


F-æolisk (ren mol)

B-melodisk mol

D-harmonisk mol

20

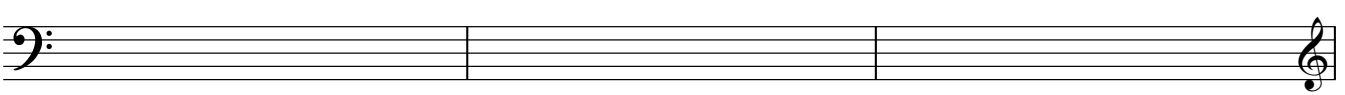


Bb-ionisk

E-lydisk

Eb-mixolydisk

23



Bb-æolisk (ren mol)

A-mixolydisk

F#-dorisk

Intervallæsning: skriv navnet på de noterede intervaller

26



Harmonisk analyse: skriv trin og/eller funktion ved becifringen

34

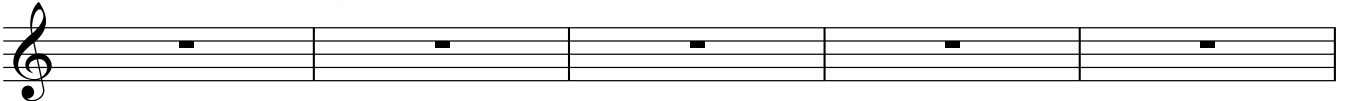
D

D/F#

G

Em<sup>7</sup>

A



39

A#<sup>o</sup>

Bm<sup>7</sup>

Em<sup>7</sup>

A<sup>7</sup>(sus4)

A<sup>7</sup>

D

