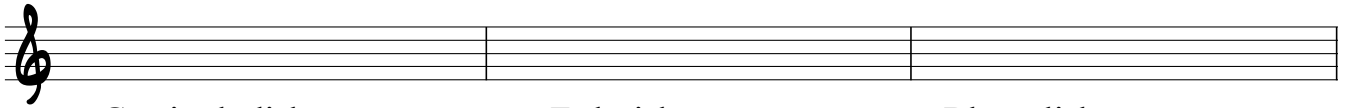


Optagelsesprøve 2003

Det Fynske Musikkonservatorium

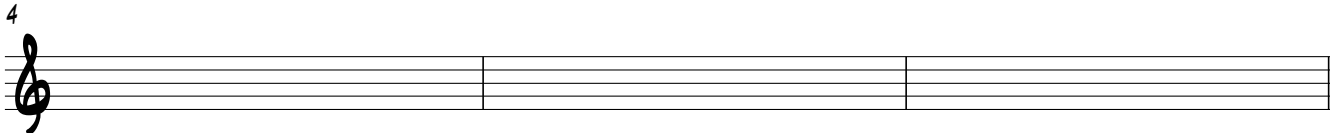
Notér flg. skalaer :



G-mixolydisk

F-dorisk

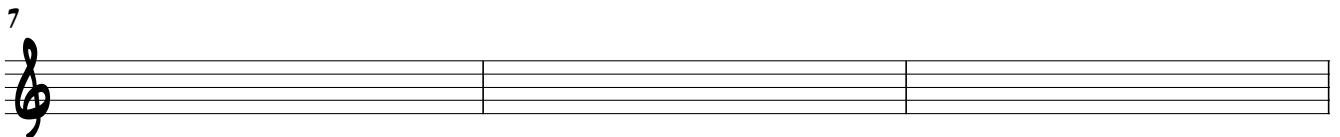
Bb-æolisk



D-lydisk

A-frygisk

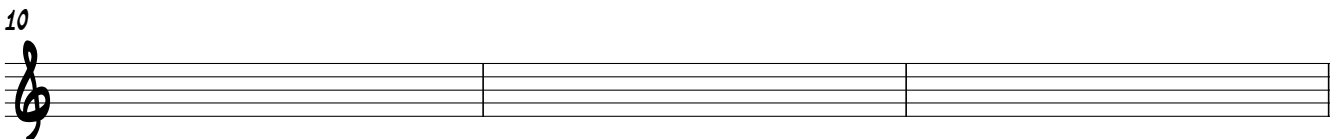
G#-lokrisk



Gb-ionisk

Bb-harmonisk mol

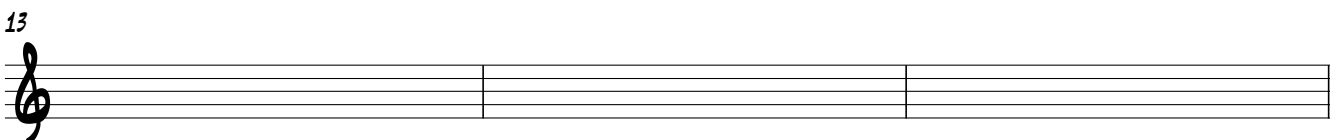
E-frygisk



A-ionisk

C#-lokrisk

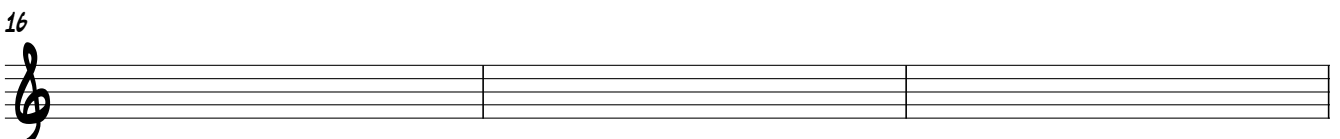
Bb-dorisk



Eb-melodisk mol

F-lydisk

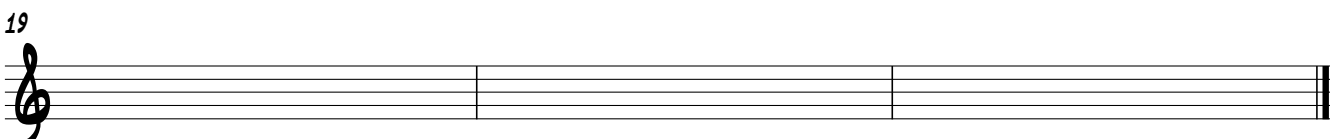
E-mixolydisk



E-harmonisk mol

E-æolisk

Eb-ionisk



G-melodisk mol

C-mixolvdisk

A-dorisk

Notér flg. akkorder :

GMAJ7 **B^bM7** **DM(MAJ7)** **A7**

A musical staff with a grand staff (treble and bass clefs) divided into four measures. The chord symbols are written above the staff: GMAJ7, B^bM7, DM(MAJ7), and A7.

5 **E^b6** **A^b** **C^o** **CM7^{b5}**

A musical staff with a grand staff (treble and bass clefs) divided into four measures. The chord symbols are written above the staff: E^b6, A^b, C^o, and CM7^{b5}. A measure number '5' is written at the beginning of the first measure.

9 **B^bSUS4** **E^bM** **B7** **D^bMAJ7**

A musical staff with a grand staff (treble and bass clefs) divided into four measures. The chord symbols are written above the staff: B^bSUS4, E^bM, B7, and D^bMAJ7. A measure number '9' is written at the beginning of the first measure.

13 **CM7** **G7SUS4** **A^b6/9** **B^bM7**

A musical staff with a grand staff (treble and bass clefs) divided into four measures. The chord symbols are written above the staff: CM7, G7SUS4, A^b6/9, and B^bM7. A measure number '13' is written at the beginning of the first measure. The staff ends with a double bar line.

Notér becifring på flg. akkorder(alle med grundtone i bunden) :

5

9

13

Udfyldningsopgave : notér de to midterste stemmer mellem melodi og bas

17 E^bMAJ⁹ DM7^{b9} G7^{b9} CM7 F7^{b9} B^bMAJ7